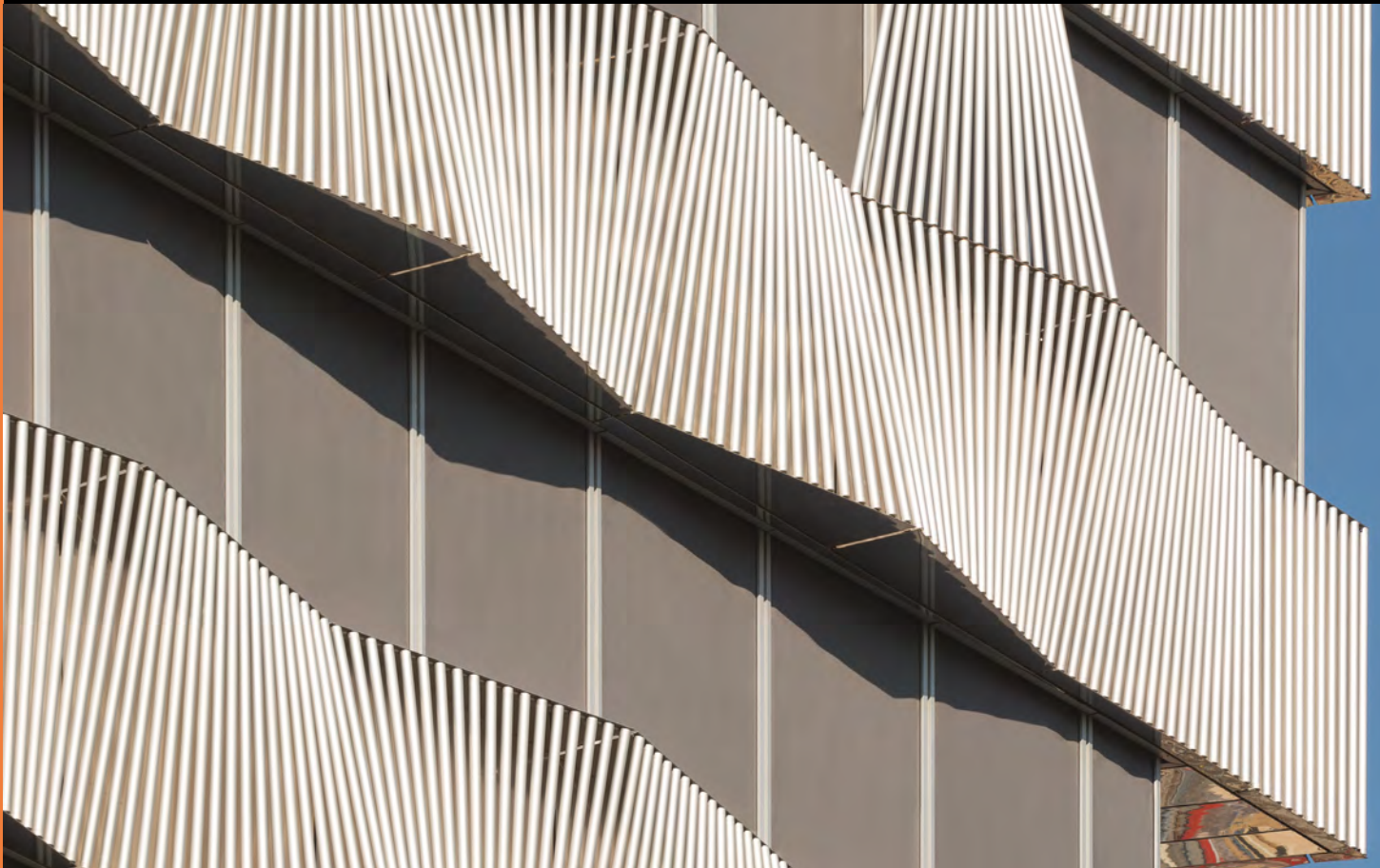


EXTERNAL SCREEN CLASSIC

SATINÉ 5500



INTELLIGENT FABRICS FOR SOLAR PROTECTION



EXTERNAL AND
INTERNAL APPLICATION

SATINÉ 5500

THE WIDEST RANGE IN THE MARKET, 52 DOUBLE-SIDED COLOURS

4 RAL COLOURS

PERFECT INTEGRATION
INTO THE FACADES

320 CM

LARGE-SIZED WINDOWS
OFFERING A SEAMLESS DESIGN

- **EXCELLENT HEAT PROTECTION:** up to **96% OF SOLAR RADIATION** reflected by external blinds (g_{tot} = 0,04 / glazing g = 0,32 and U = 1,1 W/m² K), comfort classification 4 (very good effect) according to EN 14501 standard
- Very good **GLARE CONTROL** thanks to the twill weave design which optimizes incoming natural light: up to **96% OF LIGHT RAYS FILTERED** (T_v = 4%), comfort classification 3 (good effect) according to EN 14501 standard
- **TRANSPARENCY:** clear view to the outside
- **ECONOMICAL: 4 WIDTHS (200, 250, 285 and 320 CM)** to help reduce waste when manufacturing fabric panels
- Perfect match with side channels systems such as **ZIP**
- **WEATHER-RESISTANT** and UV fading resistant
- **DIMENSIONAL STABILITY, DURABILITY** (test of 10.000 cycles, class 3 NF EN 13561), **MECHANICAL RESISTANCE:** perfect flatness even in large dimensions
- Health & Safety: conforms to standard requirements for buildings open to the public

TECHNICAL DATA

SATINÉ 5500			
Composition	42% Fibreglass - 58% PVC		
Fire, smoke classification and other official test reports*	M1 (F) - NFP 92 503 B1 (DE) - DIN 4102-1 BS (GB) - 476 Pt 6 & 7 Class 0 Euroclass C-s3-d0 (EU) - EN 13501-1 mounted according to EN 13823 & EN 14716 C UNO (IT) - UNI 9177	IMO - MED 2014/90/EU CLASE 1 (SP) - EN 13773 FR (US) - NFPA 701 F3 (F) - NF F 16-101 HHV: 13,2 MJ/kg (6,86 MJ/m ²)	
Health, safety	Greenguard® GOLD: Guarantee of indoor air quality (VOC) Antibacterial: More than 99% of bacteria destroyed - ASTM E 2180		
Openness factor	4%		
UV screen	Up to 96%		
Widths	200 - 250 - 285 - 320 cm (depending on colours)		
Weight/m²	520 g ± 5% - ISO 2286 - 2		
Thickness	0,75 mm ± 5% - ISO 2286 - 3		
Colour Fastness to light (scale of 8)	7/8 - ISO 105 B02 (white not graded)		
Mechanical resistance	Breaking	Tear	Folding
Warp	> 220 daN/5 cm	≥ 9 daN	≥ 100 daN/5 cm
Weft	> 200 daN/5 cm	≥ 8 daN	≥ 100 daN/5 cm
	ISO 1421	EN 1875-3	ISO 1421**
Elongation (warp and weft)	< 5% - ISO 1421		
Packaging	Rolls of 52 lm - Width 320 cm: rolls of 33 lm		
Confection	Advice note on request		

This product's technical data are in conformity with this brochure as of the date of publication. MERMET SAS reserves the right to change the technical data; only those provided on the company's website www.sunscreen-mermet.com shall be deemed to be authentic. Where applicable, MERMET SAS also reserves the right to withdraw this product from sale should any of the technical properties or characteristics set out above prove to be inadequate or rendered impossible as a result of a change in regulations or in knowledge or understanding.

* Reports available on request, please contact Mermet

** Internal procedure derived from ISO 1421 standard

THERMAL AND OPTICAL FACTORS in the European standard EN 14501

SATINÉ 5500 - OF 4%	Thermal factors					Optical factors
	Fabric			Fabric + Glazing / gtot external blind		Tv
	Ts	Rs	As	C : gv = 0,59	D : gv = 0,32	
0202 White	21	66	13	0,16 2	0,09 4	21
0205 White Canary	19	58	23	0,14 3	0,08 4	18
2002 Linen White	20	56	24	0,14 3	0,09 4	18
M36 020207 White White Pearl	19	57	24	0,14 3	0,08 4	18
0505 Canary	20	51	29	0,15 2	0,08 4	17
2020 Linen	18	53	29	0,13 3	0,08 4	16
0207 White Pearl	17	50	33	0,12 3	0,08 4	16
0702 Pearl White	17	45	38	0,12 3	0,08 4	16
0210 White Sable	17	50	33	0,12 3	0,08 4	15
0705 Pearl Canary	16	40	44	0,12 3	0,08 4	15
0720 Pearl Linen	17	41	42	0,12 3	0,08 4	15
M37 200710 Linen Pearl Sable	16	45	39	0,12 3	0,07 4	14
M45 070210 Pearl White Sable	15	41	44	0,11 3	0,07 4	14
0707 Pearl	14	38	48	0,11 3	0,07 4	13
1002 Sable White	16	46	38	0,11 3	0,07 4	13
M02 020310 White Turquoise Sable	17	49	34	0,12 3	0,08 4	13
M64 100520 Sable Canary Linen	16	43	41	0,11 3	0,07 4	12
0710 Pearl Sable	14	38	48	0,10 3	0,07 4	12
M65 100508 Sable Canary Orange	15	42	43	0,11 3	0,07 4	11
0750 Pearl Green	14	33	53	0,10 3	0,06 4	11
1010 Sable	13	39	48	0,10 3	0,06 4	10
4949 RAL 9006 White Aluminium	11	37	52	0,09 4	0,05 4	10
0201 White Grey	12	37	51	0,09 4	0,06 4	10
0703 Pearl Turquoise	14	38	48	0,10 3	0,06 4	9
2001 Linen Grey	12	32	56	0,09 4	0,06 4	9
0701 Pearl Grey	11	27	62	0,08 4	0,06 4	9
M31 010207 Grey White Pearl	10	28	62	0,08 4	0,06 4	8
1001 Sable Grey	10	28	62	0,08 4	0,06 4	8
0740 Pearl Marine	13	28	59	0,10 3	0,06 4	8
0706 Pearl Bronze	8	18	74	0,07 4	0,05 4	8
0909 Mandarin	18	44	38	0,13 3	0,07 4	7
0102 Grey White	10	31	59	0,08 4	0,05 4	7
0105 Grey Canary	9	28	63	0,07 4	0,05 4	7
0108 Grey Orange	11	26	63	0,08 4	0,06 4	7
0110 Grey Sable	10	25	65	0,07 4	0,05 4	7
0101 Grey	8	20	72	0,07 4	0,05 4	7
1006 Sable Bronze	8	18	74	0,07 4	0,05 4	7
0103 Grey Turquoise	9	26	65	0,07 4	0,05 4	6
0150 Grey Green	9	23	68	0,07 4	0,05 4	6
M01 010330 Grey Turquoise Charcoal	8	20	72	0,07 4	0,05 4	6
M38 300120 Charcoal Grey Linen	6	13	81	0,06 4	0,05 4	6
0109 Grey Mandarin	9	26	65	0,07 4	0,05 4	5
4040 Marine	14	25	61	0,10 3	0,05 4	5
0140 Grey Marine	8	22	70	0,07 4	0,05 4	5
1111 RAL 7048 Pearl Mouse Grey	5	17	78	0,06 4	0,05 4	5
3001 Charcoal Grey	5	10	85	0,06 4	0,04 4	5
0130 Grey Charcoal	5	12	83	0,06 4	0,05 4	5
0606 Bronze	5	7	88	0,06 4	0,05 4	5
3006 Charcoal Bronze	4	7	89	0,05 4	0,04 4	4
5959 RAL 7016 Anthracite Grey	4	7	89	0,05 4	0,04 4	4
3030 Charcoal	4	6	90	0,05 4	0,04 4	4
6060 RAL 9005 Jet Black	4	4	92	0,05 4	0,04 4	4

WIDTHS: 200 - 250 - 285 - 320 CM



gv = 0,59: Solar factor of standard glazing (C), low-emission 4/16/4 double glazing filled with Argon (U value thermal transmittance = 1,2 W/m²K).
 gv = 0,32: Solar factor of standard glazing (D), reflecting low-emission 4/16/4 double glazing filled with Argon (U value thermal transmittance = 1,1 W/m²K).
 Comfort classification according to EN 14501 standard: 1 very little effect 2 little effect 3 moderate effect 4 good effect 5 very good effect
 Samples tested according to EN 14500 standard defining the measurements and calculation methods as specified in the standard EN 13363-2 "Solar protection devices combined with glazing calculation of solar and light transmittance - part 2: EN 13363-2 detailed method" and EN 410 "Glass in building - Determination of luminous and solar characteristics of glazing".

Colours may be slightly different from the actual ones

Only available in 285 cm

M36

0150

0750

M02

0703

0103

M01

0740

0140

4040

0606

1111
RAL 7048

4949
RAL 9006

0202

M45

M64

0205

0705

0105

M65

0108

0109

0909

0505

6060
RAL 9005

5959
RAL 7016

Only available in 285 cm



5959
RAL
7016

SERVICE

- Calculation of solar factor gtot (glazing + blind)
- Spectral values and thermal & optical factors available on request
- Specification sheet
- A4 samples and prototypes
- Training on fabrics functionality

SATINÉ 5500

5959
RAL
7016



EXTERNAL AND INTERNAL APPLICATIONS



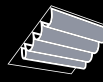
Roller blinds



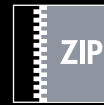
Decorative panels



Projection shades



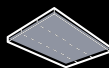
Velums



ZIP
Roller blinds



Printable



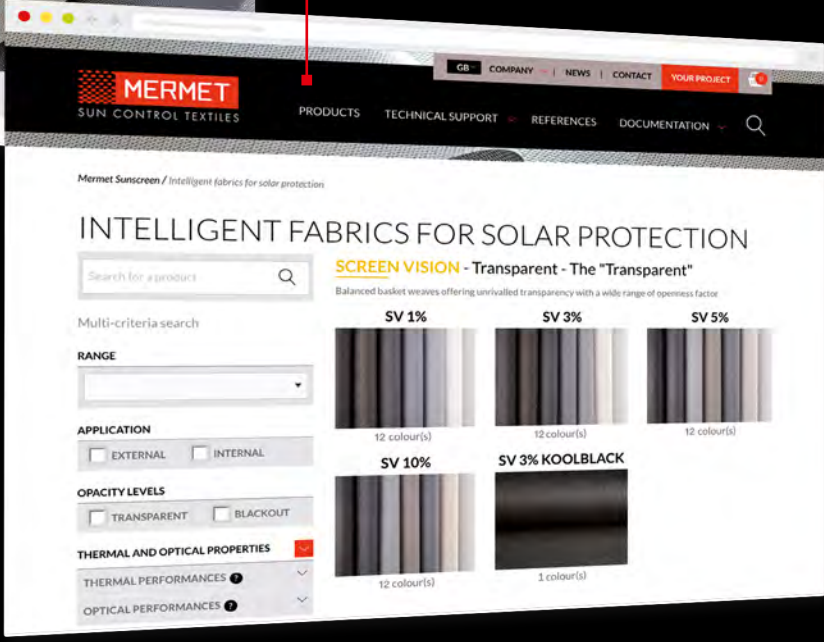
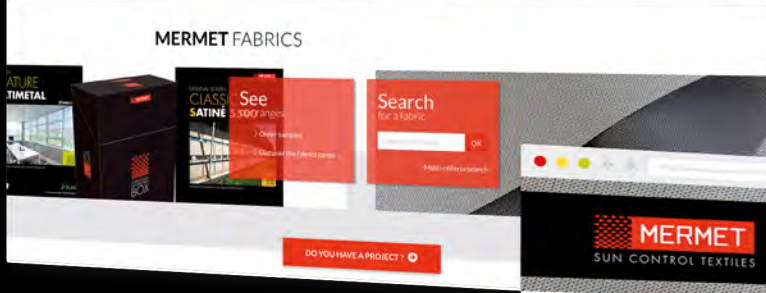
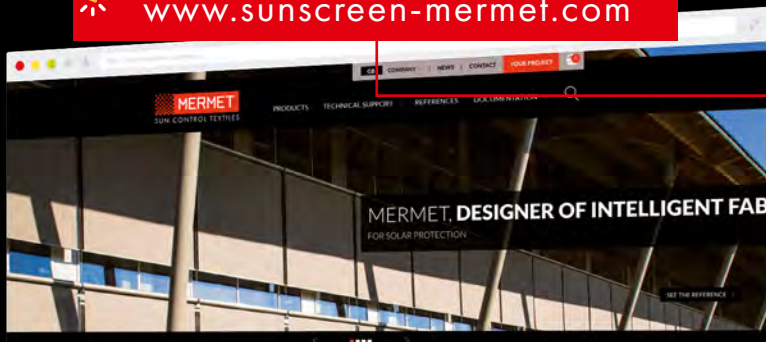
Stretched ceilings



Space fitting



www.sunscreen-mermet.com



FIND IN 3 CLICKS THE FABRIC BEST SUITED to your project

- A search engine with performances criteria
- Many documents for download
- All products information available
- A library of references

 **MERMET COLLECTION** offers a **wide choice of fabrics** for external and internal application, from transparency to total darkness, for thermal and optical comfort. To receive other brochures from the collection, **contact us**.



58, chemin du Mont Maurin - 38630 Les Avenières Veyrins-Thuellin - France
Tel. +33(0) 474 336 615 - Fax +33(0) 474 339 729

This brochure must be read and interpreted in accordance with the General Terms & Conditions of Sale of MERMET SAS, with which it forms an indissoluble whole. The General Terms & Conditions of Sale that are current at any time are those contained on the MERMET SAS website at the following address: www.sunscreen-mermet.com.

A division of the brand
MERMET