

EXTERNAL SCREEN CLASSIC

# SATINÉ 5501



INTELLIGENT FABRICS FOR SOLAR PROTECTION



EXTERNAL AND  
INTERNAL APPLICATION

# SATINÉ 5501

## TIGHT FABRIC FOR EXTERNAL APPLICATION

98%

OF LIGHT RAYS FILTERED

320 CM

LARGE-SIZED WINDOWS  
OFFERING A SEAMLESS DESIGN

■ **TOTAL GLARE CONTROL:** up to **98% OF LIGHT RAYS FILTERED**

(Tv = 2%), comfort classification 3 (good effect) according to EN 14501 standard

■ **EXCELLENT HEAT PROTECTION:** up to **98% OF SOLAR RADIATION**

**REFLECTED** by external blinds (gtot = 0,02 / glazing g = 0,32 and U = 1,1 W/m<sup>2</sup>K), comfort classification 4 (very good effect) according to EN 14501 standard

■ With **LIGHTWEIGHT AND FINE** fabric, it fits perfectly into small blind cassettes

■ Perfect match with side channels systems such as **ZIP**

■ **WEATHER-RESISTANT** and UV fading resistant

■ **DIMENSIONAL STABILITY, DURABILITY** (test of 10.000 cycles, class 3 NF EN 13561), **MECHANICAL RESISTANCE:** perfect flatness even in large dimensions

■ Health & Safety: conforms to standard requirements for buildings open to the public

## TECHNICAL DATA

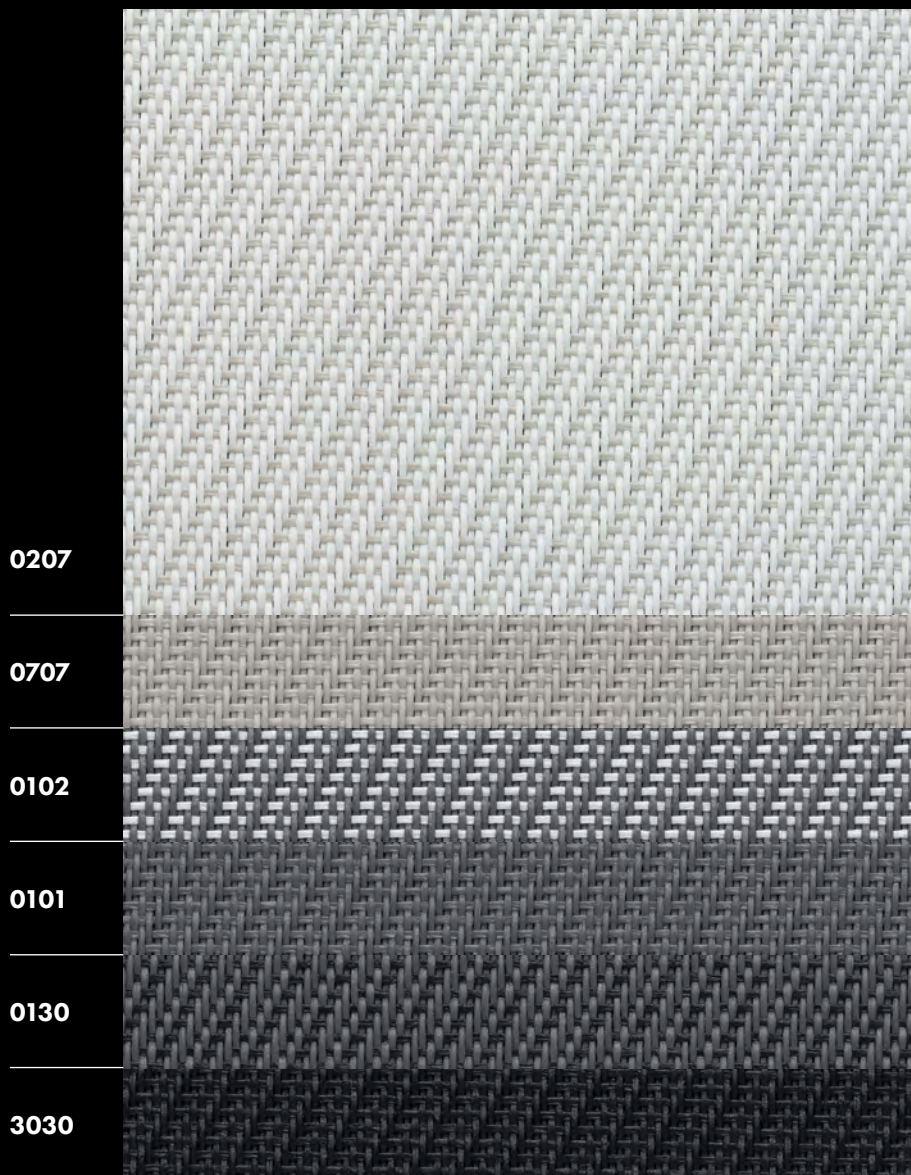
SATINÉ 5501			
Composition	42% Fibreglass - 58% PVC		
Fire, smoke classification and other official test reports*	M1 (F) - NFP 92 503 B1 (DE) - DIN 4102-1 HHV: 13,2 MJ/kg (5,94 MJ/m <sup>2</sup> )	C UNO (IT) - UNI 9177	
Health, safety	Greenguard® GOLD: Guarantee of indoor air quality (VOC)		
Openness factor	1%		
UV screen	Up to 98%		
Width	320 cm		
Weight/m <sup>2</sup>	450 g ± 5% - ISO 2286 - 2		
Thickness	0,55 mm ± 5% - ISO 2286 - 3		
Colour Fastness to light (Scale of 8)	7/8 - ISO 105 B02		
Mechanical resistance	Breaking	Tear	Folding
Warp	> 200 daN/5 cm	≥ 7 daN	≥ 100 daN/5 cm
Weft	> 100 daN/5 cm	≥ 4 daN	≥ 80 daN/5 cm
	ISO 1421	EN 1875-3	ISO 1421**
Elongation (warp and weft)	< 5% - ISO 1421		
Packaging	Rolls of 33 lm		
Making up	Advice note on request		

This product's technical data are in conformity with this brochure as of the date of publication. MERMET SAS reserves the right to change the technical data; only those provided on the company's website [www.sunscreen-mermet.com](http://www.sunscreen-mermet.com) shall be deemed to be authentic. Where applicable, MERMET SAS also reserves the right to withdraw this product from sale should any of the technical properties or characteristics set out above prove to be inadequate or rendered impossible as a result of a change in regulations or in knowledge or understanding.

\* Reports available on request, please contact Mermet

\*\* Internal procedure derived from ISO 1421 standard

WIDTH: 320 CM

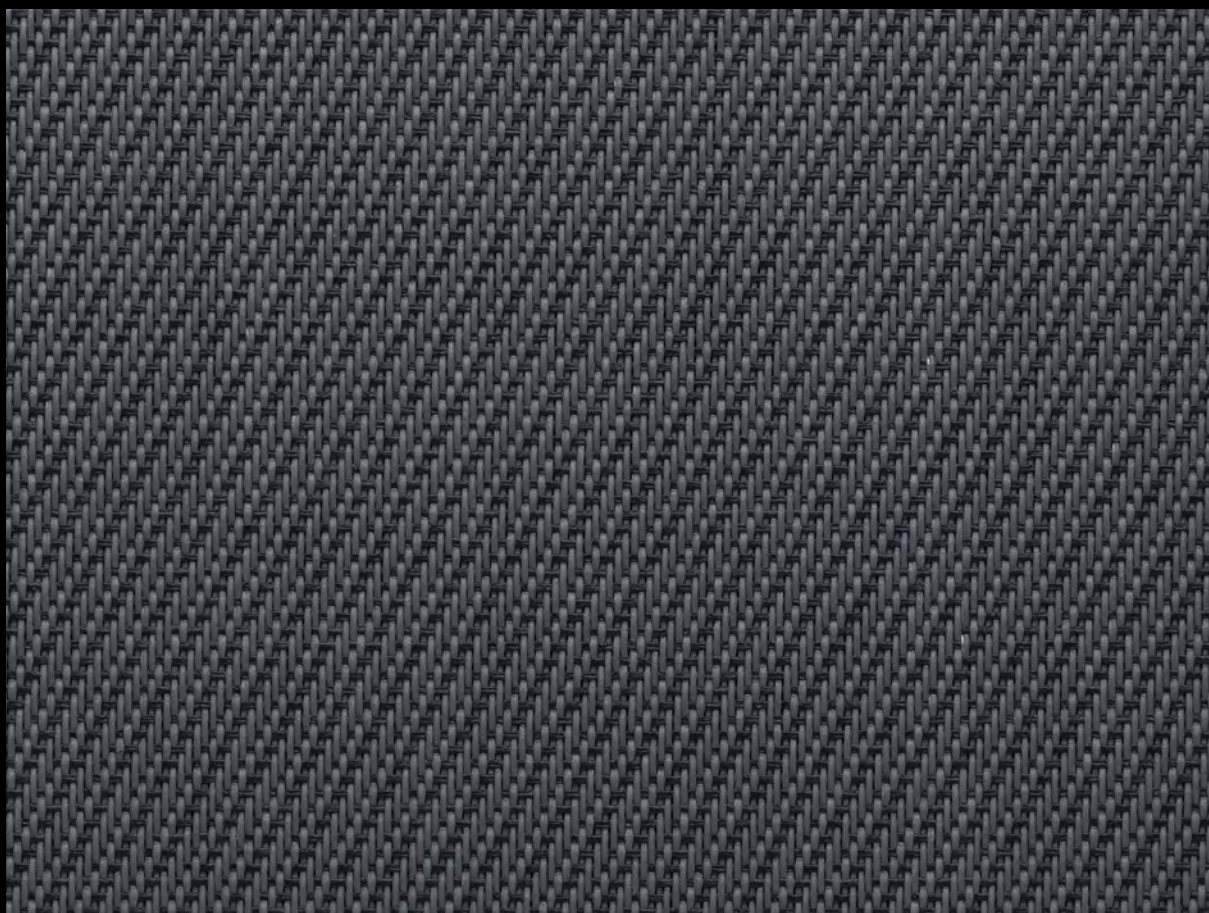


Colours may be slightly different from the actual ones

## SERVICE

- Calculation of solar factor gtot (glazing + blind)
- Spectral values and thermal & optical factors available on request
- Specification sheet
- A4 samples and prototypes
- Training on fabrics functionality





0130

## THERMAL AND OPTICAL FACTORS in the European standard EN 14501

SATINÉ 5501 - OF 1%	Thermal factors					Optical factors
	Fabric			Fabric + Glazing / gtot external blind		Tv
Colours	Ts	Rs	As	C : gv = 0,59	D : gv = 0,32	
0207 White Pearl	15	59	26	0,11 ③	0,07 ④	13
0707 Pearl	10	39	51	0,08 ④	0,06 ④	9
0102 Grey White	6	32	62	0,05 ④	0,03 ④	3
0101 Grey	5	20	75	0,05 ④	0,04 ④	3
0130 Grey Charcoal	4	15	81	0,05 ④	0,03 ④	3
3030 Charcoal	2	6	92	0,04 ④	0,02 ④	2

gv = 0,59: Solar factor of standard glazing (C), low-emission 4/16/4 double glazing filled with Argon (U value thermal transmittance = 1,2 W/m<sup>2</sup>K).

gv = 0,32: Solar factor of standard glazing (D), reflecting low-emission 4/16/4 double glazing filled with Argon (U value thermal transmittance = 1,1 W/m<sup>2</sup>K).

Comfort classification according to EN 14501 standard: ① very little effect ② little effect ③ moderate effect ④ good effect ⑤ very good effect

Samples tested according to EN 14500 standard defining the measurements and calculation methods as specified in the standard EN 13363-2 "Solar protection devices combined with glazing calculation of solar and light transmittance - part 2: EN 13363-2 detailed method" and EN 410 "Glass in building - Determination of luminous and solar characteristics of glazing".

# SATINÉ 5501

0130



## EXTERNAL AND INTERNAL APPLICATIONS



Roller blinds



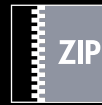
Decorative panels



Projection shades



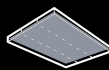
Velums



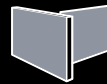
ZIP  
Roller blinds



Printable



Stretched ceilings

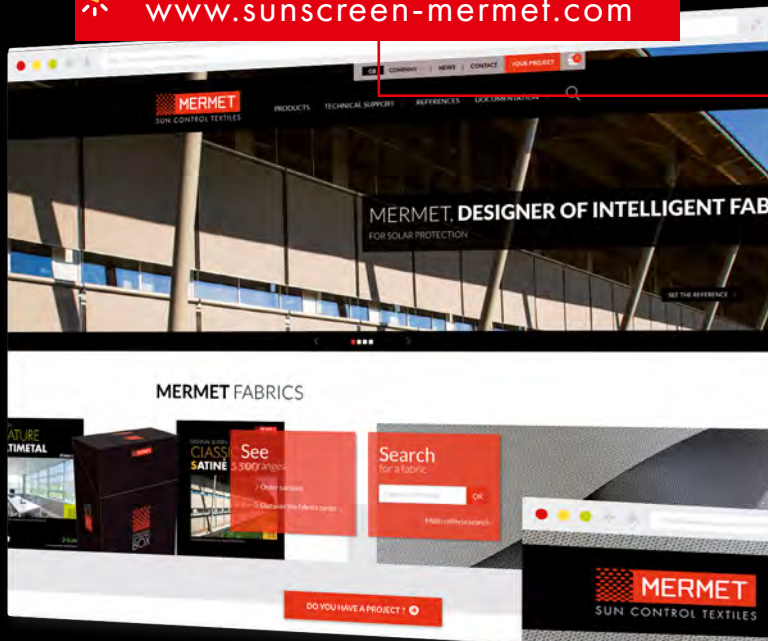


Space fitting



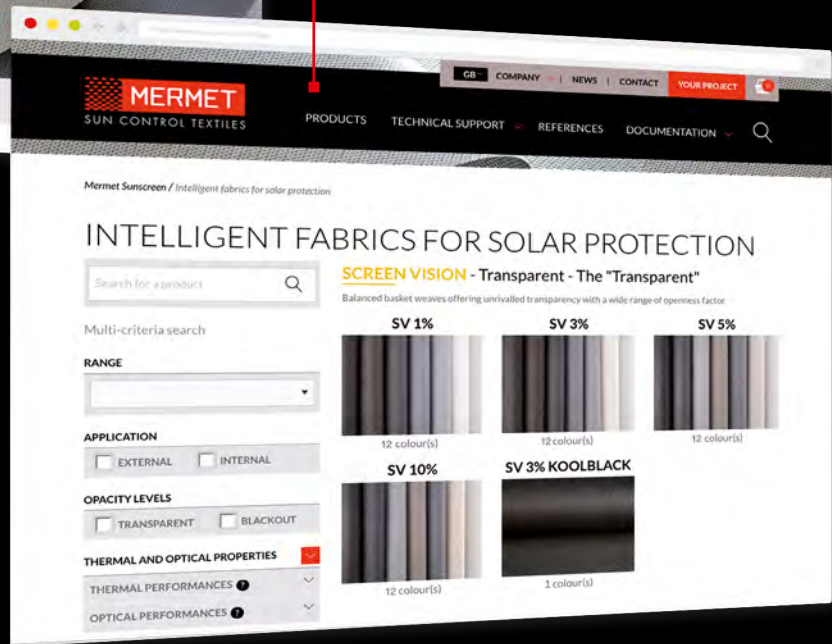


[www.sunscreen-mermet.com](http://www.sunscreen-mermet.com)



## FIND IN 3 CLICKS THE FABRIC BEST SUITED to your project

- A search engine with performances criteria
- Many documents for download
- All products information available
- A library of references



**MERMET COLLECTION** offers a **wide choice of fabrics** for external and internal application, from transparency to total darkness, for thermal and optical comfort. To receive other brochures from the collection, **contact us**.



SCREEN VISION / DESIGN / THERMIC / LOW E

EXTERNAL SCREEN CLASSIC

SCREEN NATURE

BLACKOUT 100 %

ACOUSTICS



58, chemin du Mont Maurin - 38630 Les Avenières Veyrins-Thuellin - France  
Tel. +33(0) 474 336 615 - Fax +33(0) 474 339 729

A division of the brand

# MERMET

This brochure must be read and interpreted in accordance with the General Terms & Conditions of Sale of MERMET SAS, with which it forms an indissoluble whole. The General Terms & Conditions of Sale that are current at any time are those contained on the MERMET SAS website at the following address: [www.sunscreen-mermet.com](http://www.sunscreen-mermet.com).